



MioWORK™

A500 SERIES

5" Rugged Handheld device

This MioWORK A500 Series is the perfect solution for a wide range of commercial applications. Similar size to a smartphone, the 5" Capacitive multi-touch panel provides comfort to the user without sacrificing the ruggedness, endurance and durability. It has various use applications including Logistics & Transportation, Field service, retail customer service, inventory management and pharmacy management.

The device's rugged design is suitable for indoor and outdoor application with a sunlight readable display, glove support, 1.2 metre (up to 1.8m) drop proof and IP67 water and dust resistant. Features of Android 6.0 and supporting LTE and voice* complete the smartphone criteria. The high-capacity battery and hot-swappable features allows for maximum efficiency within shift hours. The best-in-class professional bar code and front and rear camera allow excellent data capture in the workplace. In addition, the sensor area at the top of the device supports NFC/RFID for card readers.

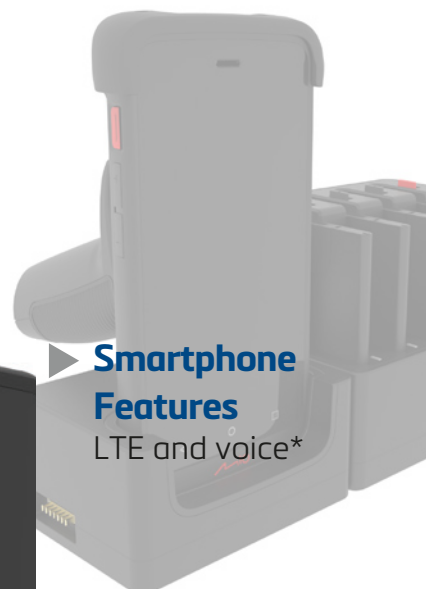
Additional accessories such as active in-vehicle, single-unit , multi-unit and battery pack charging cradle solutions allows use in multiple working environments.



- ▶ **High Performance Display/Touch**
 - 5" IPS Panel with HD resolution
 - Capacitive multi-touch, optical bonding and glove support



- ▶ **Handy Rugged Design**
 - IP67 water and dust proof
 - up to 1.8m drop resistance
 - Antimicrobial



- ▶ **Smartphone Features**
 - LTE and voice*



Specifications

A505 WIFI

A545 LTE

Display	5" (1280x720) HD wide view angle IPS panel, 450 nits	
Touch Panel	Optical bonding, glove support and waterproof	
Platform	Qualcomm Quad Core 1.3GHz	
OS	Android 6.0	
Memory	2GB RAM / 16 GB ROM	
Expansion	MicroSD up to 128GB	
Wireless Interface	Wifi 802.11a/b/g/n (2.4/5GHz)	
	N/A	GPS (support AGPS+GLONASS+BDS simultaneously)
	N/A	LTE CAT 1 Band: 3,7, 20; GSM Band: 900/1800
	Bluetooth 4.1 BLE	
NFC	RFID: ISO14443A&B, ISO15693	
	NFC: MiFare, Felica, Calypso and HF RFID tag	
	Sensor area on front side top of device	
Physical Interface	MicroSD slot	
	3.5mm jack: Supports headphone + mic / Supports dongle payment module	
	Pogo pin connector (9 pin), support charging and USB (host/client) function	
	Built-in mic x2, supports noise cancellation	
	Built-in speaker x1	
	N/A	Receiver for voice call
	N/A	Micro SIM slot x1
Battery	4110mAh & 58mAh back up battery, supports hot swappable	
	Battery life 10 hours +	
Environment	Antimicrobial	
	IP67 and 1.2m drop resistant	
	-20~+60° operating temperature	
	-30 ~ +70° storage temperature	
	Humidity: 0 ~ 95%, Non-Condense	
Sensors	Accelerometer (G sensor)	
	Ambient light sensor	
	Proximity Sensor	
	Vibrator	
BCR	Integrated 1D/2D LED imager with intelligent imaging technology	
	Factory option: Integrated 1D/2D laser imager for up to 6m range (Subject to MOQ)	
Camera	Rear: 8MP AF w/flash LED, front: 2MP	
Certification	CE/CB/FCC/IC/BQB	CE/CB/BQB
Warranty	12 months (extended warranty available)	
Weight	265g	275g
Dimensions	80mm(w),16.8mm(H), 161mm(L)	

Available accessories:
See below.

*Available on A545 only



ACCESSORIES GUIDE

Accessories for A500 Series



CHARGING ACCESSORIES



▶ POWER ADAPTOR AND CHARGING CABLE

Power adaptor:
5V/2A, with USB type A receptacle wall mount plug (UK/EU)

Charging Cable:
Connected with pogo pins, 1.3m cable, USB Type A
• Included with device

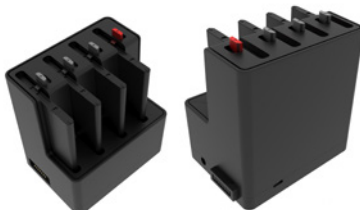


▶ SINGLE / MULTI-UNIT CRADLE

7-pin connector, MicroUSB (charging), DC-in, USB 2.0 (host)
Combine up to 4 single-unit cradles and charge simultaneously
• **Single-unit cradle charging requirements:** 10W power adaptor included with single-unit cradle
• **Multi-unit cradle charging requirements:** 120W power adaptor. Sold separately

▶ 4 SLOT BATTERY CHARGER

7-pin connector, MicroUSB (charging), DC-in and LED indicator

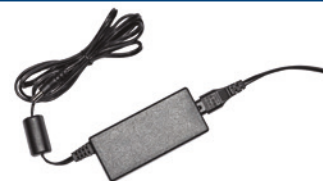


- **Single battery charging requirements:** Included 10W power adaptor suitable to charge one battery at the time
- **Multi-battery charging requirements:** Charging multiple batteries requires the 120W power adaptor
Available for purchase separately

▶ SINGLE-UNIT CRADLE + 4-SLOT BATTERY CHARGER

Combine two 4-slot battery chargers or a single 4-slot battery charger with up to 4 device cradles. Charge simultaneously.

- **Single-unit cradle and 4-slot battery charger** are sold separately
- **Charging requirements:** 120W Cradle Charger, sold separately



▶ 120W CRADLE ADAPTER

Required for:

- *Charging multiple single-unit cradles simultaneously*
- *Charging multiple batteries simultaneously in 4-slot battery charger*
- *Sold separately*

MiTAC 
MITAC EUROPE

Website : miowork.mio.com
Technical information e-mail: enterprise@mio.com
Press and Marketing information e-mail: press.miowork@mio.com
Address: MiTAC Europe, Spectrum House,
Beehive Ring Road, Gatwick, West Sussex RH6 0LG

ACCESSORIES GUIDE

Accessories for A500 Series



GENERAL ACCESSORIES



► PROTECTIVE CASING

- Enhance drop resistance from 1.2m to 1.8m
- Sold separately



► HANDSTRAP

- Detachable hand strap
- Sold separately



► PISTOL GRIP

- BCR Trigger
- Available to purchase on demand only