

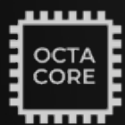
Product Introduction



PM95

**LEAD THE FUTURE OF ENTERPRISE MOBILITY:
DISCOVER THE 5G DEVICE THAT MEETS ALL YOUR NEEDS**

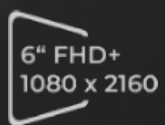
At-a-glance



Qualcomm
2.4 GHz



Android 13
(Upgradeable to 18)



Gorilla Glass



Enterprise
Hot-Swap



16 MP Rear (PDAF)
5 MP Front



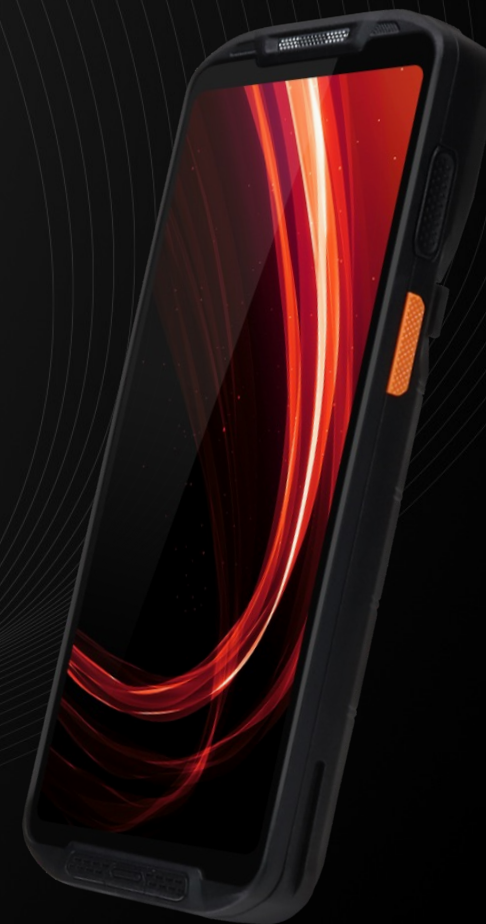
Physical PTT &
Emergency Button



1.8 m (6 ft.)
w/ Rugged Boot



IP68 and IP65



Specifications



Scan Window



3.5 mm
Earphone Jack
& Lock

Scan Button



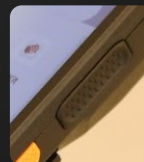
Emergency Button

Front Camera

PTT Button

Scan Button

6" FHD+ Display



USB Type C
& Screw Lock

Dimension



17.6 mm
(0.7 in.)



78.0 mm
(3.1 in.)

164.8 mm
(6.5 in.)

Specifications



Processor & Storage

Qualcomm Octa-core 2.4 GHz
6 / 64 GB (UFS)
8 / 128 GB (UFS)



Android

Android 13 (upgradable to 18)
GMS & AOSP
FOTA (Firmware Over The Air)
Android Enterprise Recommended



Network

WLAN: Wi-Fi 6E, 2x2 MU-MIMO
WWAN: 5G, 4G
BT Class 1 (opt. Class 2)/
Ver. 5.2 / BLE support
BLE Beacon (up to 30 days,
power-off)



Display

6" FHD+ (1080 x 2160 px)
Daylight Readable (500 nits, typical)
Multi-touch Capacitive
Corning Gorilla Glass



Data Capture

Supporting 1D/2D barcode
symbolologies



Camera

16 MP Rear, PDAF, Flash
5 MP Front



Audio

3 microphones (noise-canceling)
2 speakers (3W 100 ±3 dB,
SmartPA)
Receiver



Ruggedness

IP68 and IP65
1.8 m (6 ft.) with the Rugged Boot
1.5 m (5 ft.) without,
multiple drops to the concrete
floor (operating temp.)
MIL-STD-810H



Sensors

Proximity sensor
Light ambient sensor
Accelerometer
Gyro sensor / Digital compass
Barometer / SAR sensor



Battery

Standard battery: 4,950 mAh
Extended battery: 7,020 mAh



Dimensions

78.0 x 164.8 x 17.6 mm
(3.1 x 6.5 x 0.7 in.)



User Environment

Operating temperature
-20 °C to 60 °C (-4 °F to 140 °F)
Storage temperature
-25 °C to 70 °C (-13 °F to 158 °F)

Advanced network performance

| 5G: Stay connected with lightning speed

The 5G ensures a significant upgrade in data transmission, opening up your business for new opportunities. Now faster than ever, you can send high-resolution video files or even AR contents instantly.

| Wi-Fi 6E: The most advanced

Wi-Fi 6E uses a new bandwidth of **6 GHz**, expanding network capacity, reducing bottlenecks, and making everything faster. It helps businesses to adopt more IoT devices or make use of virtual reality thanks to its large capacity. While the network gets faster, the **battery consumption stays more efficient** than older generations of Wi-Fi.



A future-defining premium device

| High-end look meets functionality

Sleek and stylish, as good as consumer phones: With a thoughtful and detailed design process, PM95 delivers a high-end look, without disregarding practical functionality businesses value.

The big **6" FHD+ screen** shows lots of information clearly and merges well into the overall premium design.

The ergonomic build—carefully designed and thoroughly tested—provides a **comfortable grip and reduces slip risk.**



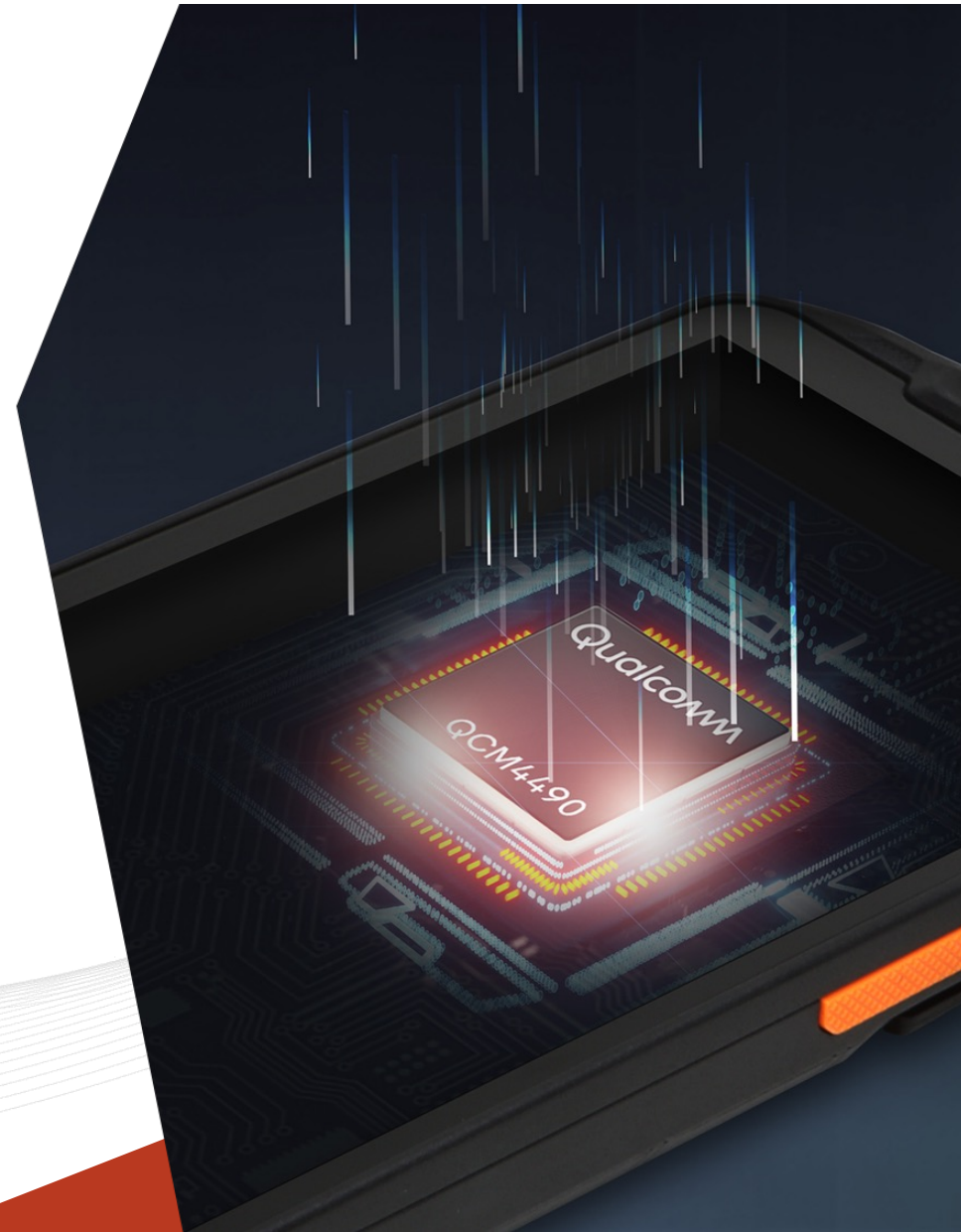
Supercharged performance for a pro

Pro-level features

PM95 features an **octa-core 2.4 GHz** processor, which, when combined with the optional **8 GB RAM** and **128 GB UFS storage**, ensures a smooth user experience that maximizes productivity. The device's optimized processing power also enhances both the data capture capabilities of its integrated 1D/2D scan engine and the performance of the **16 MP rear camera**, which includes Phase Detection Autofocus for quick, sharp images. The excellent ruggedness of **1.8 m drop resistance to concrete** (with the Rugged Boot) makes the PM95 an ideal choice for professionals who demand the utmost durability from their equipment.

BLE Beacon at its finest

PM95's advanced BLE Beacon is capable of transmitting location signals for **up to 30 days** even when the main battery is detached, significantly decreasing the chances of losing valuable devices and simplifying asset management.



Extra power for wider application

PTT & MCPTT

PM95 features a dedicated physical button for Push-To-Talk (PTT) on the right side, facilitating instant team communication. Additionally, an Emergency Button on the top of the device **complies with Mission-Critical Push-to-Talk (MCPTT) standards**, catering to specialized and critical applications. The device is equipped with three noise-canceling microphones and powerful dual speakers (3W, 100 ±3 dB with SmartPA), ensuring clear PTT communication even in the noisiest environments that workers typically encounter.

Payment

For added versatility, the PM95 offers an integrated **IC/MSR module as an option** for a physical payment solution as well as **contactless payment via NFC**. It comes with EMV contact & contactless L1 certifications and supports Master, VISA, and more.



Accessories

Standard



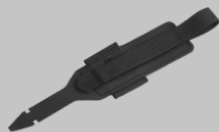
AC/DC Adapter (USB-C)



LCD Protection Film



Battery
(4,950 mAh or 7,020 mAh)



Hand Strap



Country Plug

Optional



4 Slot Battery Charger



Single Slot Cradle
(opt. Ethernet)



Gun Handle



UHF RFID Reader



Rugged Boot

Android solution



EmKit™
Enterprise Mobility Kit

The **Enterprise Mobility Kit (EmKit™)** is Point Mobile's value-added service kit engineered for the pure benefit of system integrators. Experience software services as intelligent as the ruggedness of our industrial handhelds—fully compatible with all our Android GMS certified devices.

<Main features>



Direct Clone

Solution for restoring the devices to the same settings with no internet connection. With Direct Clone, a Master PDA becomes a hotspot server and sends its backup file to nearby client devices to clone the settings.



Scan2Stage

PC tool for provisioning Point Mobile Android devices. With Scan2Stage, IT administrator can prepare the settings of the device and make QR code for Scan2Set.

Android solution



PULS

Patches, Updates & Lifetime Support

PULS is Point Mobile's lifetime solution, which extends the life cycle of Android-based Point Mobile enterprise devices up to seven years after a product launch.

Up to 5 years from the initial launch until the end of sales

Two additional years after the end of sales

Up to 7 years of updates & security patches



Stay up-to-date with the latest update for up to 7 years



Security patches are provided regularly



Conveniently update your devices in the field **by FOTA**

Mobile Device Management



PMDM



Make a Profile
Easily as You Want



Check Device Status
At a Glance



Easy Deployment



PMDM
DEVICE CONSOLE

**PMDM is a mobile device management solution
for managing and monitoring your PM Android devices**

Centralized management of enterprise devices is vital for better productivity. You should provide a device configuration so that the workers can concentrate on their work with the device, and also decrease the device downtime by predicting when to replace the battery, etc.

PMDM brings to life the centralized management desired by IT administrators through its array of management features.

PMDM Features



Features	Standard (Free)	Enterprise (Paid)
Device Management Easy Grouping & Easy Deployment	Fast Enrollment & Easy Provisioning	✓
	Smart Group	✓
Asset Management Check Device Status At a Glance	Device Status Visibility	✓
	Custom Notifications	✓
	OS Update	✓
	Device Info Synchronization	✓
	Remote Control	✓
	App & File Store	✓
Profile Management Make a Profile Easily as You Want	Configure Profile with Ease	✓

✓ Increase productivity

Fast Enrollment and easy provisioning for all Point Mobile devices

✓ Minimize downtime

Monitoring device and battery health status to know replacement time in advance

✓ Remote control

PMDM will support Remote control in the new version

Applications

The Right Choice

-Change for the better, with Point Mobile.



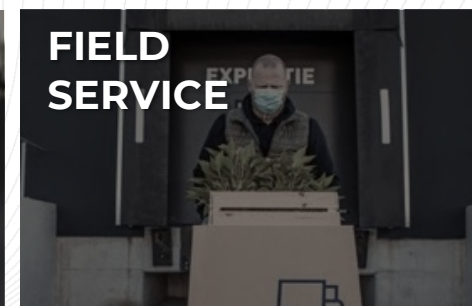
RETAIL



WAREHOUSE



LOGISTICS



FIELD SERVICE



PUBLIC SECTOR



MANUFACTURING



Point Mobile Co., Ltd.

<https://www.pointmobile.com/en/contactus>

Tel: +82-2-3397-7870~1

ARS: 1800-3010

Fax: +82-2-3397-7872

Address: 9F Gabeul Great Valley,
32, Digital-ro 9-gil, Geumcheon-gu,
Seoul, Korea 08512